

Specially designed for Alarm function warned with Lighting and High Octave Sound with LED blinked when poorly contacted ground. Exclusive designed for accurate and easy use.

\*Before use of this strap, careful read of this instruction manuals is required and must be kept for instant checking again when needed.  
\*No. EPS-01G can be used for general applications of either non-application working atmosphere and/ or ESD Protected Area.

**APPLICATION**

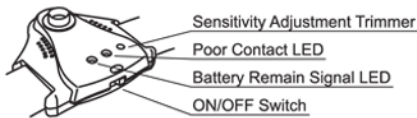
Assembly operation of electronic equipment may produce destructive static electricity which destroys IC and electronic parts. However, by wearing such Ground Sensor, the static electricity saved in human body shall be removed to ground earth.

**HOW TO USE**

Wearing Ground Sensor over the wrist, connect Ground Cord to the earth ground. (earth cable or earth terminal) After switch-on, confirm ground contact.

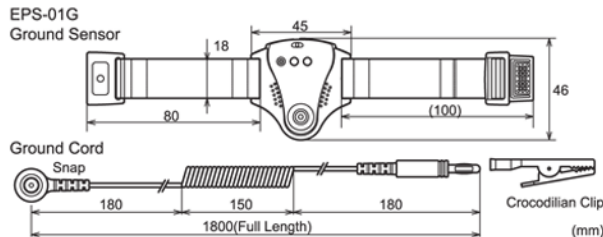
**SPECIAL FEATURES**

- \* Unique signal sending to the operator with light and sound when pin-jack forgotten to be plugged in or came off, poor contact to earth due to cable disconnection by sensing the poor contacting between human body and wrist strap.
- \* Synthetic Band is easy and flexible to be installed. Damaged and dirt can be solved by replacing with another separately sold new band.
- \* Ergonomic form over the hand wrist secures firm ideal contact. Free from harmful nickel melting in the sweat over the wrist because high class Stainless steel SUS316L prevents.
- \* Ground cord has a built-in 1MΩ currency limit resistor.
- \* By having installed Trimmer to adjust the sensitivity, does not select the particular area of operation but secures accurate checking of contact situation.
- \* LED will tell you the balance of the battery remain when the rest 20% reached.
- \* You can use as Pin-Jack coupling when Crocodilian Clip removed.



**SPECIFICATIONS**

- Housing : ABS Resin
- Metal Part : Stainless steel
- Resistance : Metal to Ground Cord : About 2MΩ
- Band length : About 180mm
- Ground Cord : Full Length 1.8 meter (1MΩ Currency Limit Resistor applied and Crocodilian Clip)
- Battery in Use : CR1220 Used one unit
- Battery life : 18 months (Based on 8 hours use per day)  
Life to be changed according to use-environment.

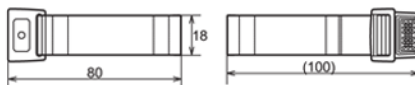


**OPTIONAL**

**Separately sold Ground Cord**  
EPC-30 (3.0 meter Max.) EPC-18 (1.8 meter Max.)  
This extra long EPC-30 (3.0 meter Max.) goes through under your working clothes to arm without disturbance or jammed.

**Replaced Band**

EPB-01 (Replaced band 5 sets attached Exclusive hand tool 1 pc.)  
Exclusive band for Ground Sensor (EPS-01/EPS-01G)



EPB-01



EPC-30 How to Use

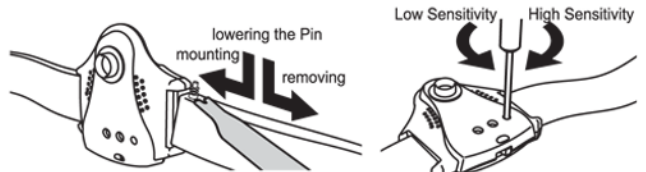
**HOW TO REPLACE THE WRIST BAND**

**Remove**

\* Concave part of the tool to be inserted between main body and Belt, by pin downing the Band to be released.

**Mounting**

- \* Like watch, insert the pin into the connection pin through at bottom.
- \* By lowering the Pin pulled down with the concave part until upper hole to accept the top of Pin with spring reaction. Cautious pinning because of its spring action.



HOW TO REPLACE THE WRIST BAND

HOW TO ADJUST THE SENSITIVITY

**HOW TO ADJUST THE SENSITIVITY**

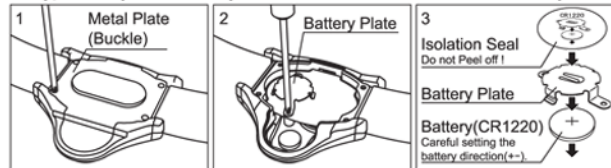
- \* Before the shipment made from our factory all available adjustment of sensitivity trimmer is made.
- \* According to the operation environment, poor contact cannot be inspected. You can increase the sensitivity trimmer adjustment.
- \* By setting the best sensitivity according to the working area, you can check the accurate ground situation.
- \* When the operation area has been changed, another inspection over the contact investigation to be confirmed before the operation of tools.
- \* To adjust it use 3mm or smaller diameter cross recessed driver or No.00 or plain 1.8mm driver.

1. Turn the sensitivity adjustment trimmer slowly until it hits left hand side turning.
2. Check the alarm function available after Ground Sensor powered on.
3. Connect the cord to the ground earth and check if the alarm stopped.  
If the alarm stopped, the adjustment completed.
4. In case the alarming is not stopped, another right turn trimming slowly with ground earth contacted, and when the alarm stopped this adjustment completed.

**HOW TO REPLACE THE BATTERY**

1. Remove the four screws mounted over the metal Buckle in the back of main body.
2. Remove the Battery Plate (two screws) inside.
3. With care of direction of battery (CR1220) installation(+ -) make the setting and fix the battery plate.

- \* Even if the battery is dead you can use it as the regular wrist strap, but to prevent the ESD, when the LED signaled for the limited remain of the battery power, we highly recommend the replacement with new battery.
- \* The Seal placed over the battery plate inside is the isolation function against Metal plate (buckle) and print card. Never peel it off!
- \* Use cross recessed driver (No.00) to unscrew the 6 screws. In the mounting process never add excessive driving power but light and slow driving recommended. Utmost care of the screw lost now wrong screwing.



**CAUTIONS**

- \* Never just pull off Ground Cord, or it may cause the disconnection of the Cord. Be sure to pull it off by holding "Snap".
- \* Never drop off nor hitting.
- \* Do not use this unit for other application.
- \* Be cautious for handling this unit when you are allergic.
- \* Do not disassemble nor modify this unit, it may cause for fatal accident and damage to the function of this unit.
- \* Never fail from contacting Ground Earth before use.
- \* Ground Cord has the built-in 1MΩ Currency Limit Resistor to protect human body from the accident. Keep yourself off its Power Supply to protect yourself from the danger.
- \* Inspection function of Ground Sensor Contact situation must be understood as just a Standard and not so accurate. Before use of this Sensor, check the resistance volume between Earth and Ground Sensor. Never use this Ground Sensor beyond the Ohm value range each user specified.
- \* In case of ESD Applied Soldering iron used, no function to the poor-contact.  
Better not use it together with ESD applied soldering iron.

**VESSEL CO., INC. OSAKA JAPAN**

17-25 Fukaekita 2-chome, Higasinari-ku, Osaka 537-0001 Japan

Tel:+81 6 6976 7778 Fax:+81 6 6972 9441

http://www.vessel.jp

Printed in Japan